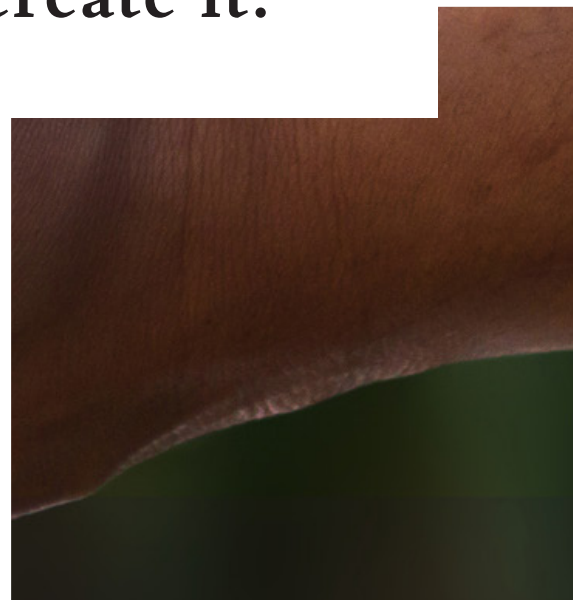


**MASTER OF SCIENCE
COMMUNICATION FOR DEVELOPMENT
AND SOCIAL CHANGE**

**Don't just
observe change,
create it.**

TEMPLE UNIVERSITY

**KLEIN COLLEGE OF MEDIA
AND COMMUNICATION**



PASSIONATE ABOUT COMMUNICATION FOR CHANGE IN PHILADELPHIA AND BEYOND?

The Master of Science in Communication for Development and Social Change is a one-year program that focuses on the history, goals and practices of communication for social change.

▼ EFFECTIVE ACTION FOR AFFECTING CHANGE

This program emphasizes effective action by tailoring academic training to the needs of practitioners, policy makers and project managers in the development sector, as well as community advocates working in citizens' media. Our students' work is informed by theory to create impactful change in our immediate community and across the globe.

COURSEWORK

The 30 credit hours of coursework on theory and research methodology provide an advanced curriculum grounded in the promotion of responsible and ethical change. Core topics of study include communication and social change theory, citizen and community media and solutions journalism. Also, students can pursue areas of specialization through elective courses in Temple's other schools and colleges. Together, the available courses and the practicum capstone experience allow for a program of study that is flexible and tailored to students' individual interests.

"Having an international lens provides a multilayered perspective into the topics we learn about. Being in the U.S., our education system is very United States-centric, so adding an international perspective challenges students to expand their outlook and to be open-minded. The program's international approach taught me about the duality that accompanies each international event."

Enitan Aigbomian, KLN '18



WHY STUDY COMMUNICATION FOR DEVELOPMENT AND SOCIAL CHANGE?

Specialists trained in communicating with communities, government, non-governmental organizations and civil society are in high demand. However, few academic programs provide the specialized training needed to address challenges in areas such as public health, environmental sustainability and human rights.

START THE CONVERSATION

Graduates of the program will be able to plan community projects, facilitate dialogue processes, provide policy expertise and raise public understanding through media campaigns.

IN HIGH DEMAND

With Temple's location in the heart of an urban setting along the East Coast, there are many organizations and agencies in the development sector in need of this specialized expertise. Many of our alumni have gone on to land the following positions:

Technical writer at Developing Radio Partners

ArcGIS support analyst at ESRI
Monitoring and evaluation officer at Greenpeace

Community outreach specialist at Stokes Creative Group

Communication consultant for the United Nations

Project manager at The Corps Network

Communications manager at Read by 4th

Digital communication at UNICEF

Consultant at Temple University Small Business Development Center



[KLEIN.TEMPLE.EDU/
CDSC](https://klein.temple.edu/cdsc)